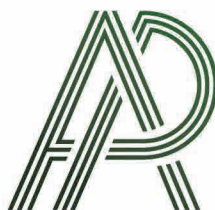


ALL-PRO

CABINETS



*where style
meets quality*



*Transform Your Home,
Transform Your Life!*

Discover the countless ways a kitchen or bathroom remodel can be more than just an upgrade — it's a transformative experience that truly turns your house into a home. Our renovations help you create a space that reflects your lifestyle, enhancing functionality and enjoyment.

Upgrade your countertops and cabinets to combine aesthetics with practicality, and add a personal touch with our custom designs. Create living spaces that reflect your unique taste and preferences.

A kitchen renovation is a wise investment that will increase your home's resale value and appeal to prospective buyers, making your home even more desirable.

Turn everyday tasks into enjoyable experiences with thoughtfully planned layouts, enhanced lighting, and extra storage. Your home can become a sanctuary that motivates and inspires—whether you're cooking, entertaining, or simply relaxing. Make every moment special.

Ready to start your remodeling journey? Explore our comprehensive range of solutions designed to bring your vision to life. Let's transform your space to reflect your lifestyle, add value, and enrich your daily experiences.

*Your dream home is just a remodel away.
Turn the page and begin the journey today!*

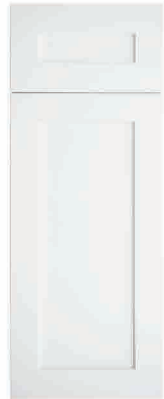


SHAKER

*timeless
elegance*

Shaker is our most popular style, known for its “simple elegance” that complements both traditional and modern kitchen designs. These cabinets are built in a “framed” style and are available in a variety of paint and stain finishes.

LINEN



HARBOR



BOULDER

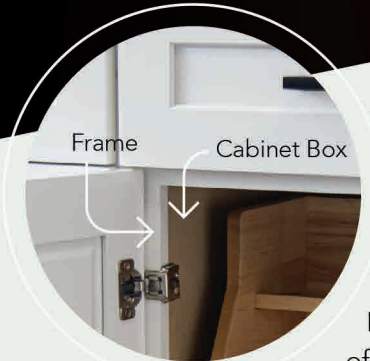
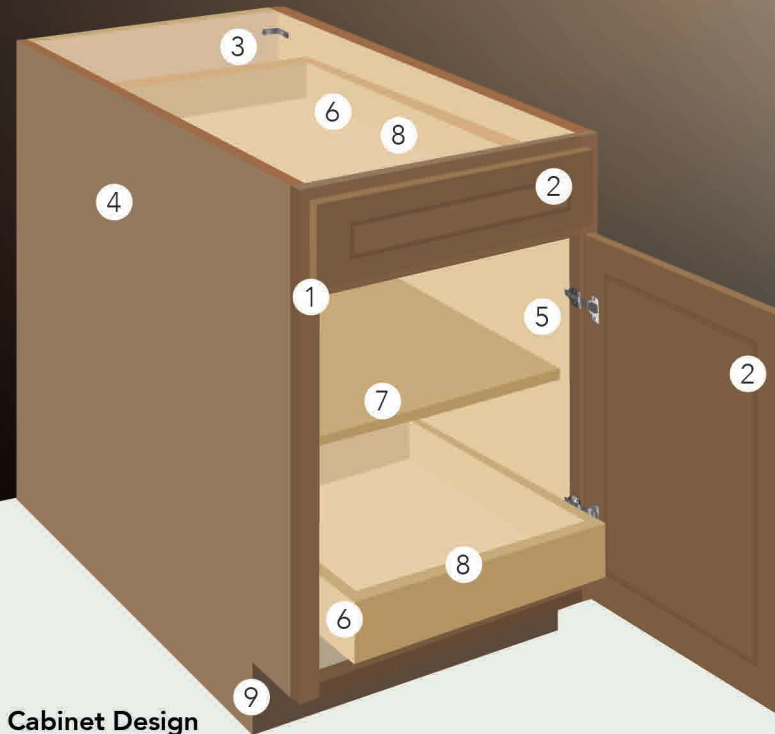


WHITE OAK



FRAMED CABINETS

shaker style



1. Framed Cabinet Design

Framed cabinets feature a traditional design with a frame attached to the front of the cabinet box. This type of construction provides additional stability and durability to the cabinet structure. The frame also adds a decorative element to the cabinet doors, enhancing the overall aesthetic of the kitchen or bathroom. Our face frame is made of solid maple wood 3/4" thick.

2. Door Frame

Maple wood door frame, 2 1/2" thick. Middle panel is 5/8" HDF*. Our cabinets feature full overlay doors.



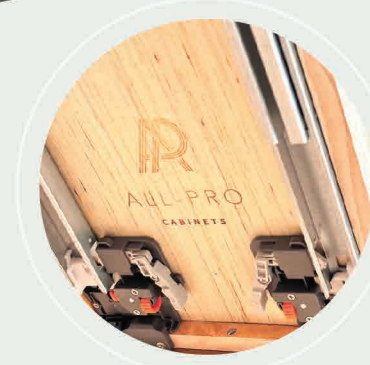
3. Brackets

L-shaped metal brackets provide additional support and stability to cabinets with large brackets at the top of the cabinet as well as smaller brackets on sides and bottom.



4. Exterior Finish

We use 1/2" furniture-grade plywood, precisely matched to the color of the frame and doors.



6. Glides and Clips

Heavy duty undermount Soft Close glides with 6-way adjustable clips.



8. Drawers

5/8" solid wood dovetail drawer box.

5. Hinges

6-way adjustable Soft Close hinges.



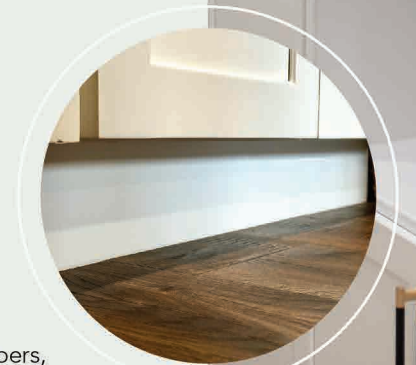
7. Shelves

3/4" thick furniture-grade plywood.



9. Toekick

4 1/2" high, 1/2" thick



*HDF (High Density Fiberboard) is an engineered wood, composed of wood fibers, resin and wax. HDF is one of the most durable materials that will withstand the test of time, weather and temperature. Used in both framed and frameless cabinets.

SLIM

*new and
beautiful*

Our slim cabinets are built as “frameless” cabinets and are available in both painted finishes and stained wood options.

LINEN



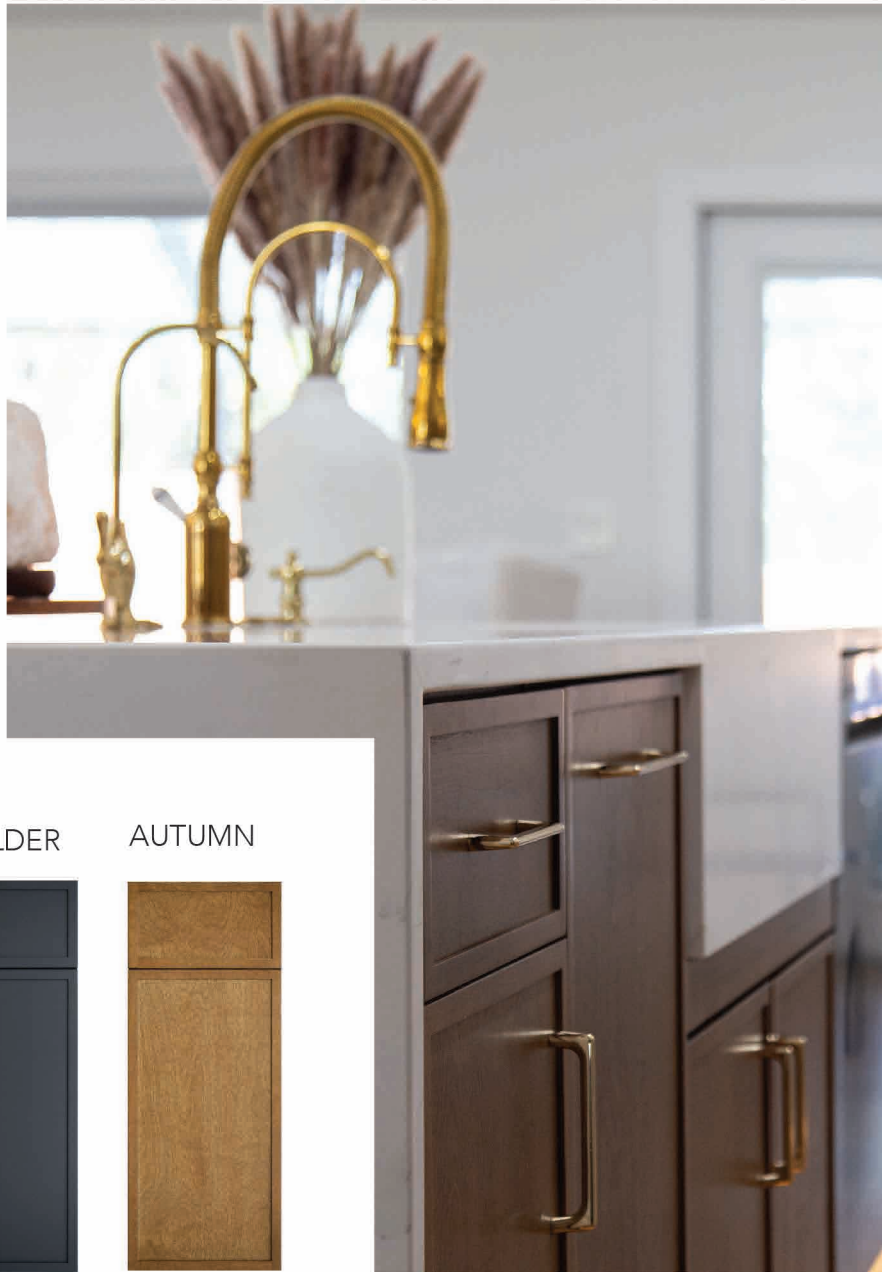
HARBOR



BOULDER



AUTUMN



Slim cabinets are a top trend, offering a clean, modern, and elegant look, that elevates any kitchen. With a narrow frame and minimalist design, they create a sense of visual lightness and openness, making them ideal for both smaller and large spaces.



FLAT

European and minimalist

Flat-style cabinets are a popular choice for modern kitchens, offering a sleek and streamlined appearance. Characterized by their flat, rectangular doors and minimal profiles, these cabinets provide a clean and unobtrusive look that allows the focus to be on the surrounding design elements. With no visible handles or hardware, flat-style cabinets create a sense of continuity and flow, making them an ideal choice for minimalist or contemporary spaces. Additionally, they can be easily customized with various materials, finishes, and colors to match specific design preferences, allowing homeowners to create a cohesive and stylish look that suits their unique taste.

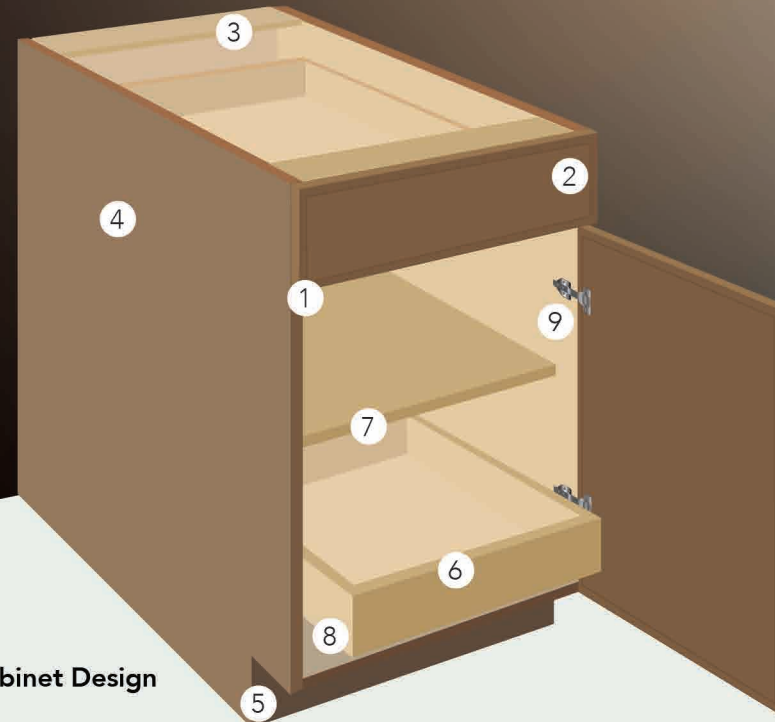


Available in:
LINEN



FRAMELESS CABINETS

*slim and flat
styles*



1. Frameless Cabinet Design

A frameless design cabinet, also known as a European-style cabinet, features a sleek, modern look with no face frame, offering clean lines and full overlay doors. The assembly of frameless cabinets entails directly affixing the cabinet box to the cabinet door, creating a smooth and cohesive look. Without the face frame, these cabinets provide more storage space and easier access to the contents. This design also allows for a sleek aesthetic that is popular in contemporary kitchen designs.

2. Door Frame

Maple wood door frame, 3/4" thick. Middle panel is 5/8" HDF*. Flat design - entire door HDF*.

3. Support Stretchers

Our cabinets are sturdy with 3/4"x3" top support in front and back.

4. Exterior Finish

We use 3/4" furniture-grade plywood edge banded on all four sides making it humidity resistant.

5. Hinges

6-way adjustable Soft Close hinges

6. Glides and Clips

Heavy duty undermount Soft Close glides with 6-way adjustable clips.

7. Shelves

3/4" thick furniture grade plywood.

8. Drawers

5/8" solid wood dovetail drawer box.

9. Toekick

4 1/2" high, 1/2" thick.

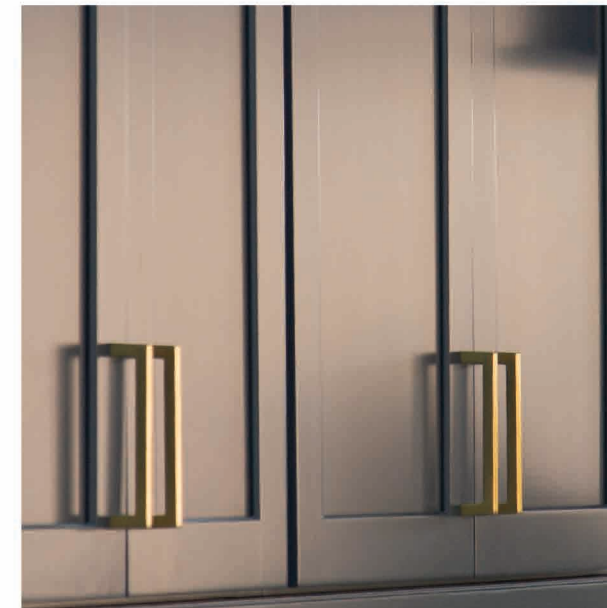
*HDF (High Density Fiberboard) is an engineered wood, composed of wood fibers, resin and wax. HDF is one of the most durable materials that will withstand the test of time, weather and temperature. Used in both framed and frameless cabinets.

DOOR STYLE DIFFERENCES



*HDF (High Density Fiberboard) is an engineered wood, composed of wood fibers, resin and wax. HDF is one of the most durable materials that will withstand the test of time, weather and temperature. Used in both framed and frameless cabinets.

NOT ALL ARE
BUILT THE SAME WAY,
BUT ALL ARE
built well





small DETAILS
MAKE A *big*
DIFFERENCE



PANTRY PULL-OUT



WOOD TIERED
CUTLERY DIVIDER



SPICE DRAWER INSERT



POT AND PAN
ORGANIZER



ROLL-OUT TRAY



SLIDING SHELVES



WASTEBASKET PULL-OUT



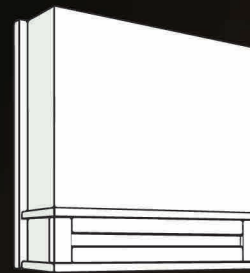
LAZY SUSAN



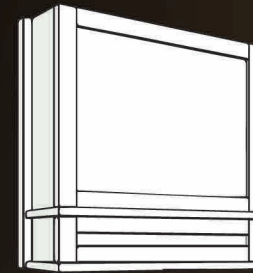
MICROWAVE BASE CABINET



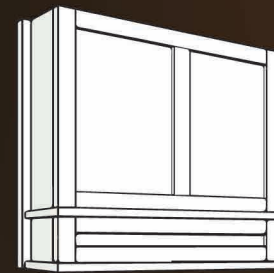
OUR RANGE HOODS



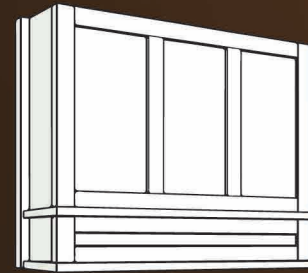
WALL RANGE HOOD
No Panel



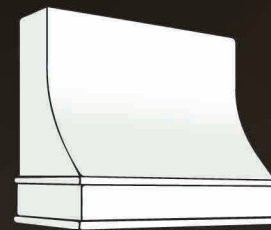
WALL RANGE HOOD
One Panel



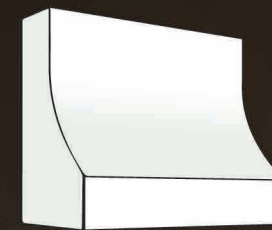
WALL RANGE HOOD
Two Panels



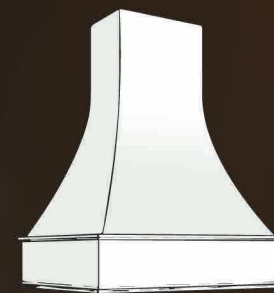
WALL RANGE HOOD
Three Panels



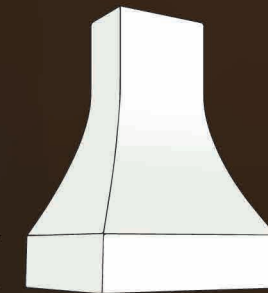
SLOPED RANGE HOOD
With Trim



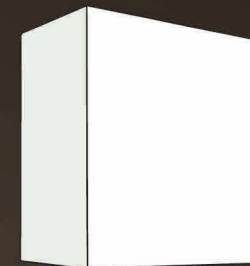
SLOPED RANGE HOOD
No Trim



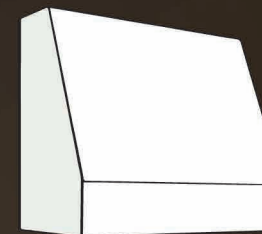
ARTISAN RANGE HOOD
With Trim



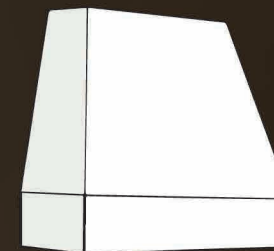
ARTISAN RANGE HOOD
No Trim



FLAT
RANGE HOOD



ANGLED FLAT
RANGE HOOD



TEMPERED
RANGE HOOD

*Custom
colors and
features
available.*

*choose from
our hardware
collection*



AND MORE



WE ADMIT IT, WE DON'T HAVE EVERYTHING.

AND THAT'S WHY WE ARE WILLING TO GO THE

EXTRA MILE TO *create* SOMETHING
beautiful, SOMETHING
personal, SOMETHING *You*

Customization of cabinets offers a versatile way to enhance both functionality and aesthetics in any space. Homeowners can select from a wide array of colors, from classic neutrals to vibrant hues, allowing the cabinets to either blend seamlessly with the surrounding decor or serve as bold focal points. Additionally, the shapes of cabinets can be tailored to fit unique layouts and personal preferences, whether opting for traditional sleek lines, modern geometric designs, or even unconventional shapes that maximize space and storage. This level of customization not only reflects individual style but also ensures practicality, making cabinets not just storage solutions, but integral components of cohesive and personalized interior designs.



the possibilities are endless



Cabinets can effectively enhance organization and aesthetics in various spaces such as [home offices](#), [bathrooms](#), [laundry](#), [mudrooms](#), and [living rooms](#).

With a wide range of designs, finishes, and functionalities, they're ideal for maximizing space while complementing the overall decor of any room.





*Now, let's turn your dream
into reality.*



ALL-PRO

CABINETS

(904) 730-3101 | ALL-PROCABINETS.COM

visit our showroom for a free consultation

5329 PHILLIPS HWY, JACKSONVILLE, FL 32207

MON-FRI. 9AM-5PM